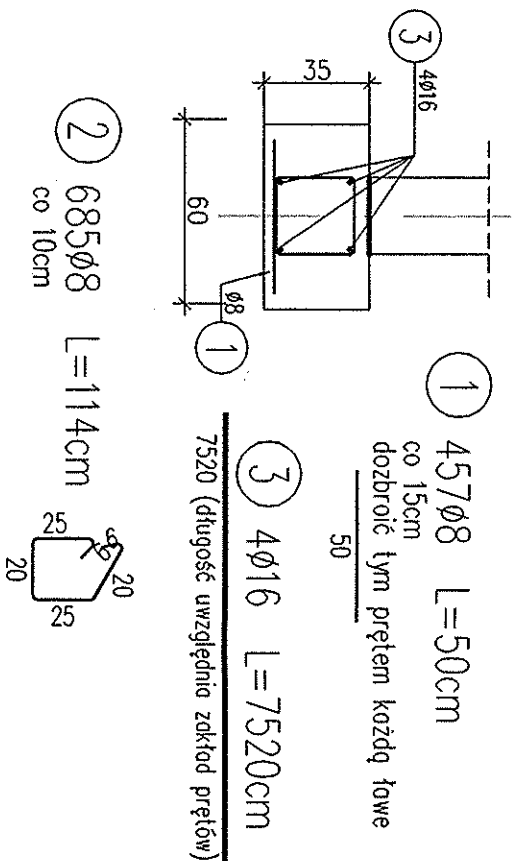


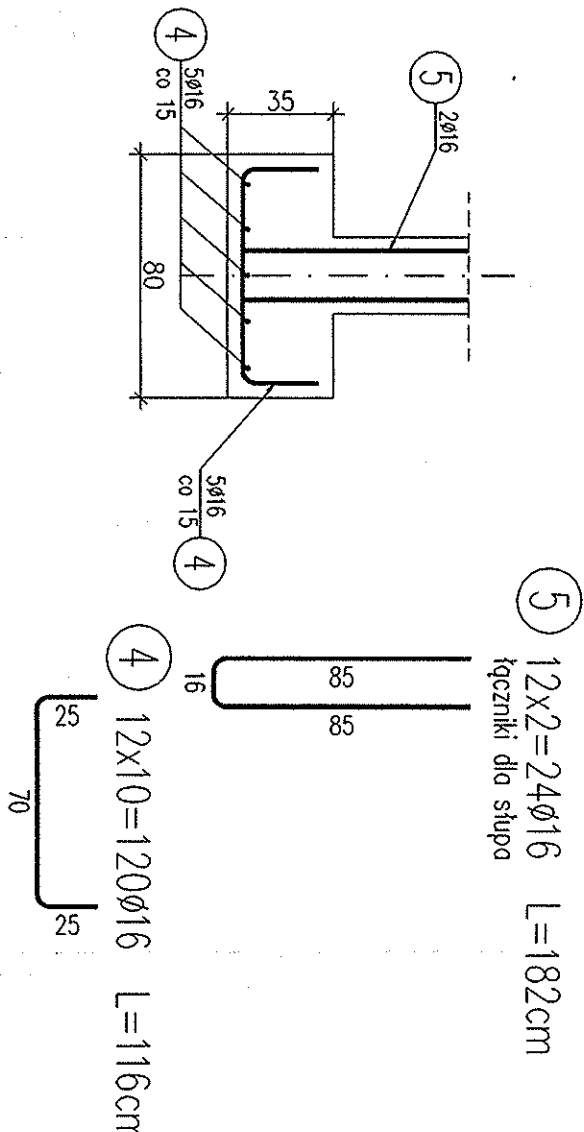
Lawy fundamentowe L=68,5m

1:25



Stopy fundamentowe szt.12

1:25

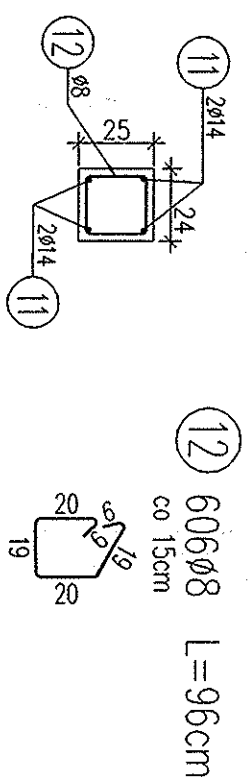


Wieniec W1; L=59.92m, rz.g +2,85

Wieniec W2; L=21.42m, wieniec w skosie ścian szczytowych

Wieniec W3; L=9.54m, rz.g +3,88 (w osi 2)

1:25

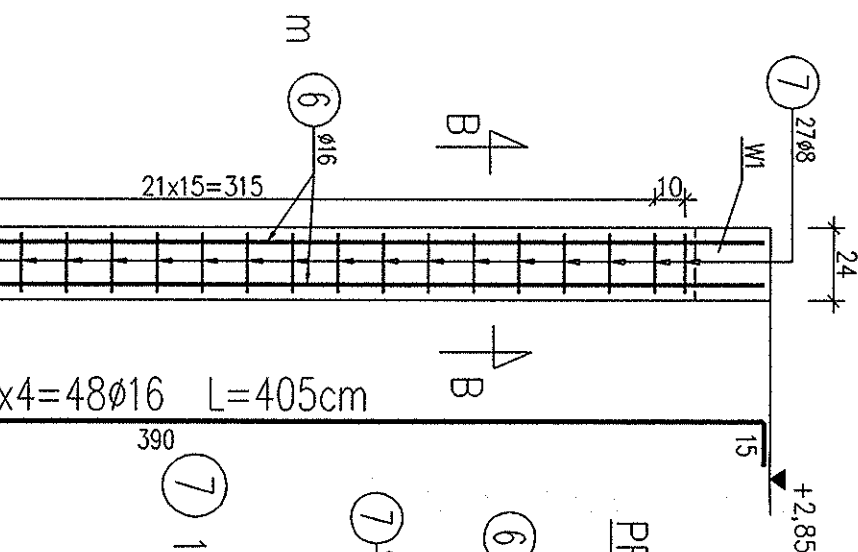


4ø14 L=9995cm

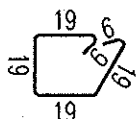
9995 (zowiera zakiody prętów)

Słup S1; szt.12

1:25

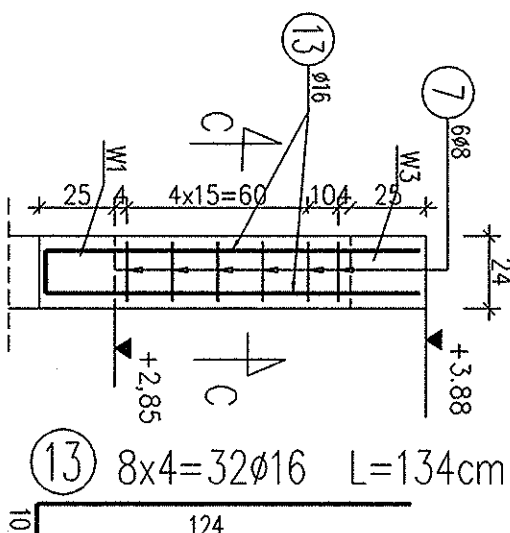


12x27=324ø8 L=94cm

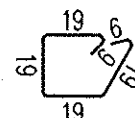


Słup S2; szt.8

1:25

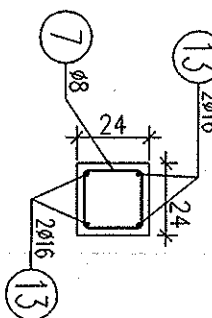


8x6=48ø8 L=94cm



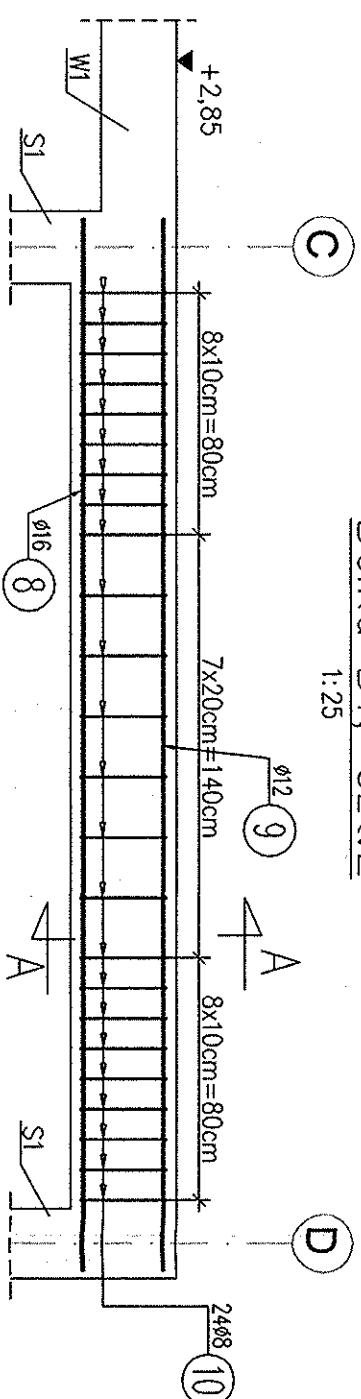
PRZESKÓJ C-C

1:25



Belka B1; szt.2

1:25



2x3=6ø12 L=349cm

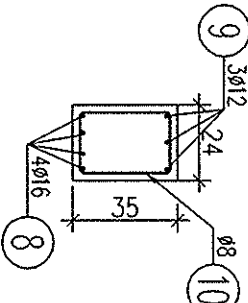
349

2x4=8ø16 L=349cm

349

PRZESKÓJ A-A

1:25



2x24=48ø8 L=116cm

